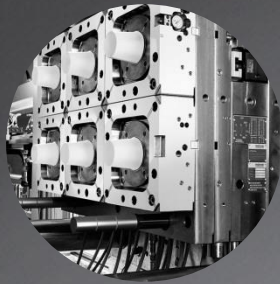




RPC – THE ESSENTIAL INGREDIENT

# Bramlage Division Astra Plastique



# MAGELLAN



## Magellan

New Snap Hinge Screw On 55 mm Cap  
for 38/400 neck finish

**TOP UP or TOP DOWN Applications**



## 2014 - Innovation

- **New 24 prints mold** with in mold closing technology
- Improved and updated process
- Developed and produced in FRANCE
- Selected raw material :
  - **PPCopo** → Premium quality giving force, nervosity and suppleness to the cap and more particularly to the hinge
- **Butterfly hinge** well known for its high resistance and great elasticity →
- Improved design & rounded shapes in line with market demand



# Advantages

- Lightweight thus cost reduction
- Floating « Snowflakes » valve for an optimized pouring
- Compatibility with PET & PP bottle neck
- One IHS liner for PET & PP bottles
- 2 liner types : Standard or with strip (premium)
- 2 Orifice types : Star or Valve
- Relocking system secured in 1 click on thumb notch area
- No drain holes for better design
- Engraving possibility for closure customization (under request)

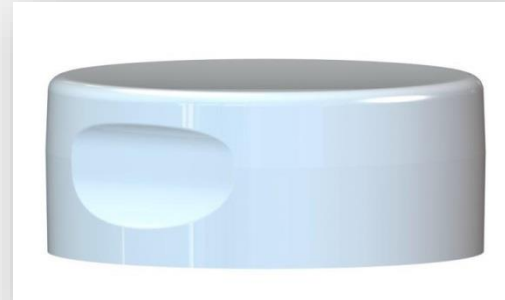


## Lightweight

- Valve version 9,71 gr
- Star Orifice version 9,69 gr



- No or few adjustment on production lines
- No packaging modification





# Liners

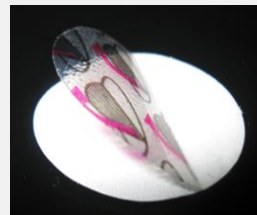
## Standard :

- Compatible for PP bottles
- Compatible for PET bottles
- Compatible for PE bottles



## Lift and Peel :

- 1 reference for PP bottles
- 1 reference for PET bottles



## Premium : UNDER FINALIZATION

- Compatible for PP/PET bottles



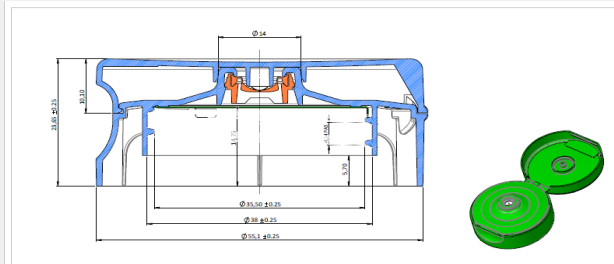
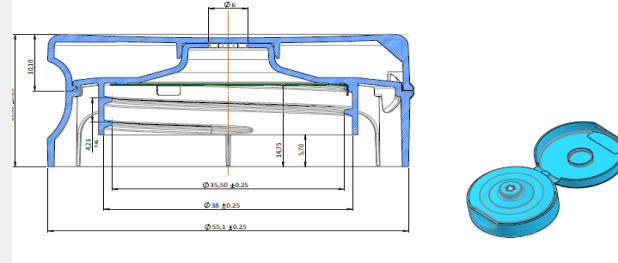
Possible Customization by marking  
**Easy to use**

## Versions

### Star orifice



- *Cost savings*
- *Perfectly adapted for mayonnaise sauce*



### Valve

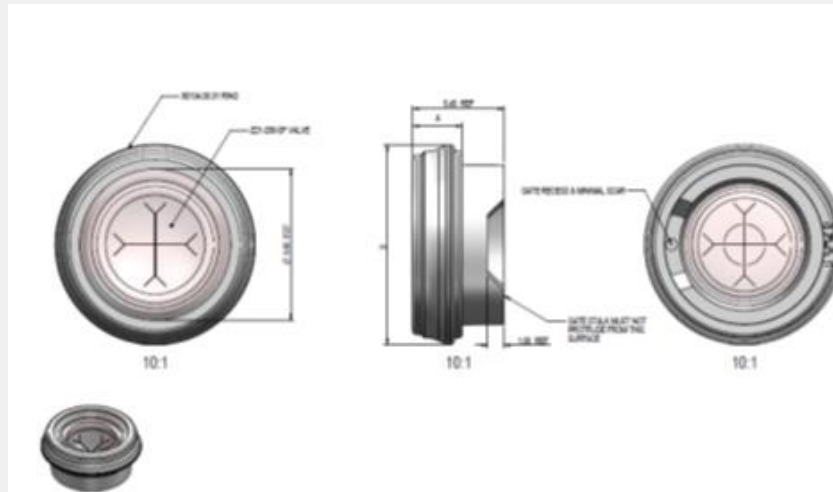


- *Precision of the pouring*
- *Cleanliness*
- *Premium aspect*



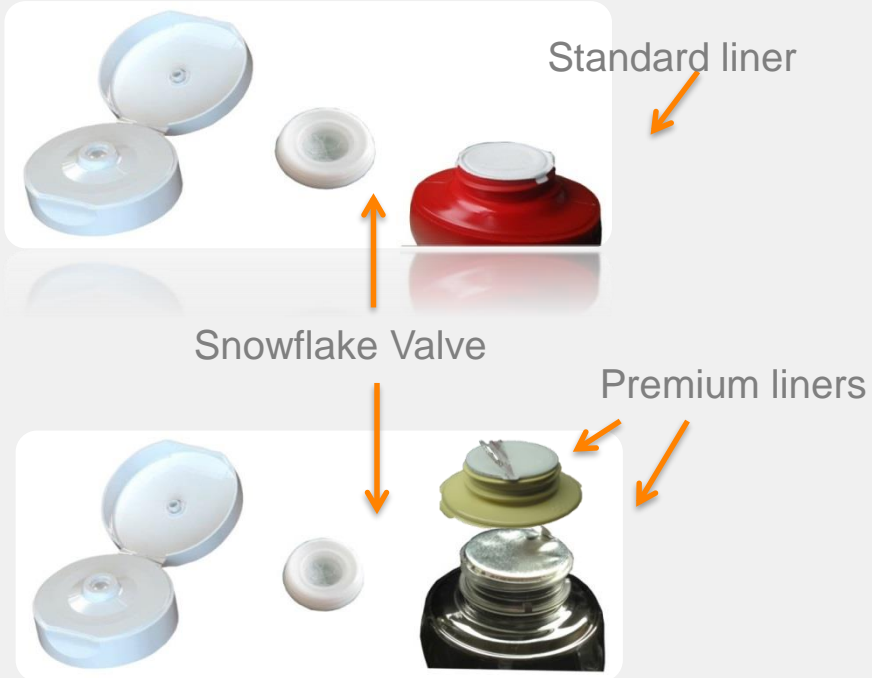
# Floating Snowflakes Valve

- Optimized shape for a clean and precise pouring.
- Patented
- Recycling Friendly
- GCS Expertise : 1 billion valves produced worldwide.
- Valve selected for its performance and its functionality for all the last GCS developments.



# Magellan Range

## With valve:



## Star orifice :





RPC – THE ESSENTIAL INGREDIENT

Thanks for your attention

