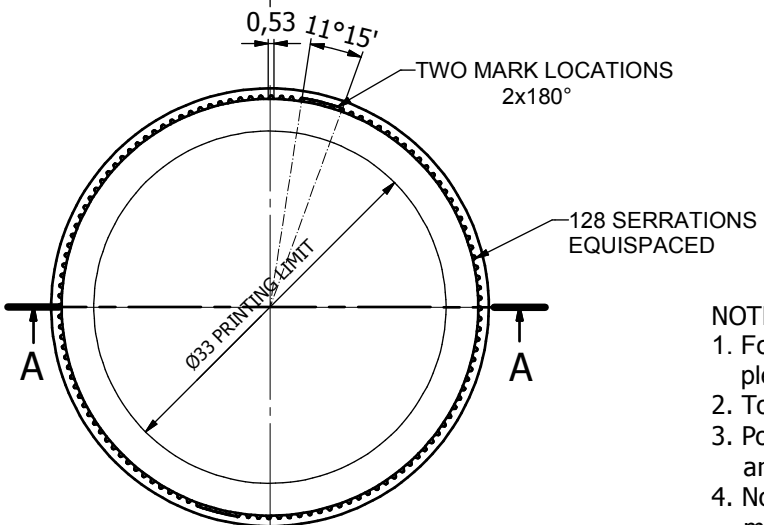
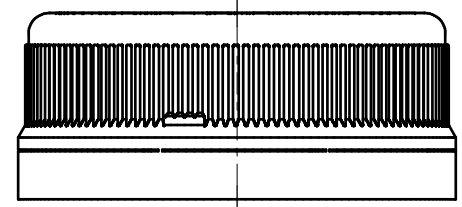
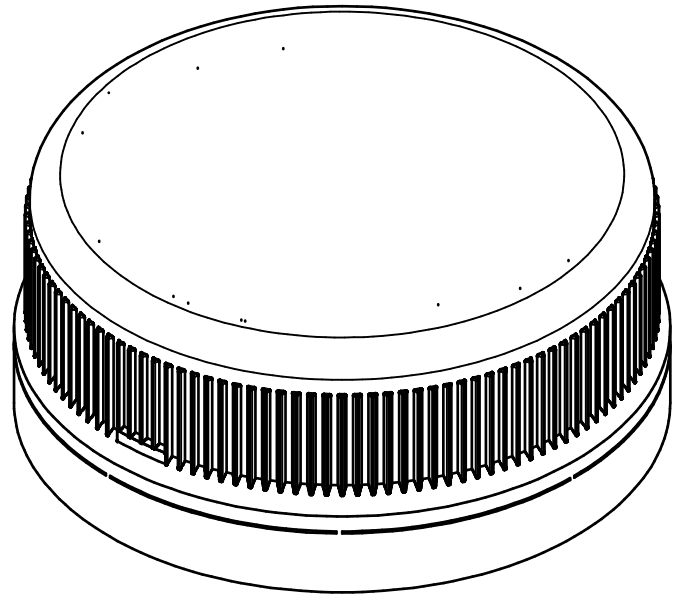
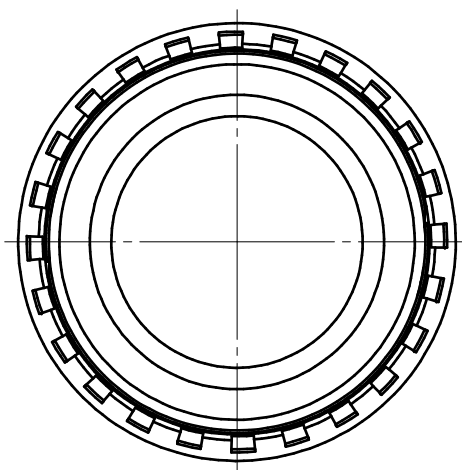
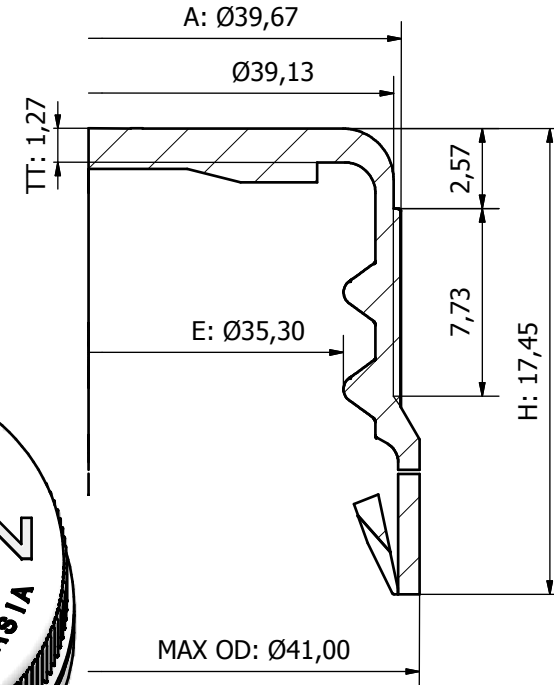


NOMINAL DIMENSIONS	
E Ø35,30	+/- 0,25
H 17,45	+/- 0,25
A Ø39,67	+/- 0,25
TT 1,27	+/- 0,08
DC -0,15	+0,3/-0,6
Ton, T1, T2	See Note*
WEIGHT	4,0 g

SECTION A-A



NOTES:

1. For application consider Cap Processing Guideline (CPG) - please contact our customer service for additional information.
2. Tool number is placed on the beginning of thread profile.
3. Postmolding ovality dimensions can be influenced by packaging and logistics.
4. Nominal Diameters are defined as mean of two rectangular measurements.

CLOSURE INFORMATION

Tamperband: J-Band	Finisch Type: V04 / F01	Pitch: 7.26mm/360°
Shell Mat.: PP	Closure Type: Hotfill	Threads: 2
Liner Mat.: TPE	Drawing Type: CUSTOMER	
Drawn by: Przemyslaw Syslo	Date: 2013-07-08	Approved by: Slawomir Nowak
Drawing number: SWC-200.001.C.04		Date: 2013-07-10
Title: 38 VEF		

CONFIDENTIAL
 THIS DOCUMENT IS THE EXCLUSIVE PROPERTY OF SILGAN WHITE CAP. THE INFORMATION CONTAINED HEREIN IS OF A CONFIDENTIAL AND PROPRIETARY NATURE AND MUST BE USED ONLY FOR THE PURPOSE FOR WHICH IT IS DISCLOSED. THE HOLDER AGREES NOT TO DISCLOSE TO A THIRD PARTY AND TO RETURN THE SAME TO SILGAN WHITE CAP. UPON COMPLETION OF USE OR REQUEST THIS DRAWING IS NO LONGER A CONTROLLED DOCUMENT WITHIN SILGAN WHITE CAP. DO NOT ASSUME THAT THIS IS THE CURRENT DRAWING. THE 3D CAD IS THE MASTER MODEL FOR THIS PRODUCT